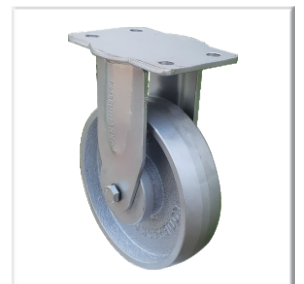


# KOTIBHASKAR WHEELS & CASTORS

# KOTIBHASKAR



REVOLUTION IN WHEELS & CASTORS

2024 - A



Respected Sir / Madam,

It gives us immense pleasure to introduce ourselves as one of the leading manufacturer of Wheels & Castors. The factory has all the facilities to conceive, design & manufacture a wide range of Wheels & Castors. We are continuously adding new & innovative products to improve overall material movement inside factories.



**MARKETING OFFICE**

We assure you that our Wheels & Castors will,

1. Reduces man efforts, man hours, man power & fatigue.
2. Reduces chances of accidents due to improper material handling.
3. Increases productivity & efficiency by smooth flow of material.

Please feel free to call for any clarification or any additional information.

**AMOD KOTIBHASKAR (98224 13252)**



**HYDRAULIC SHEAR MACHINE**



**HYDRAULIC PRESS BRAKE**



**HYDRAULIC PRESS SHOP**



**TURNING SHOP**



**DRILLING SHOP**



**PROFILE CUTTING**



**UHMW MOULDING SHOP**



**PU - CI MOULDING SHOP**



**VMC**



**CASTOR LOAD TESTING MACHINE**



**SEMI FINISHED MATERIAL**

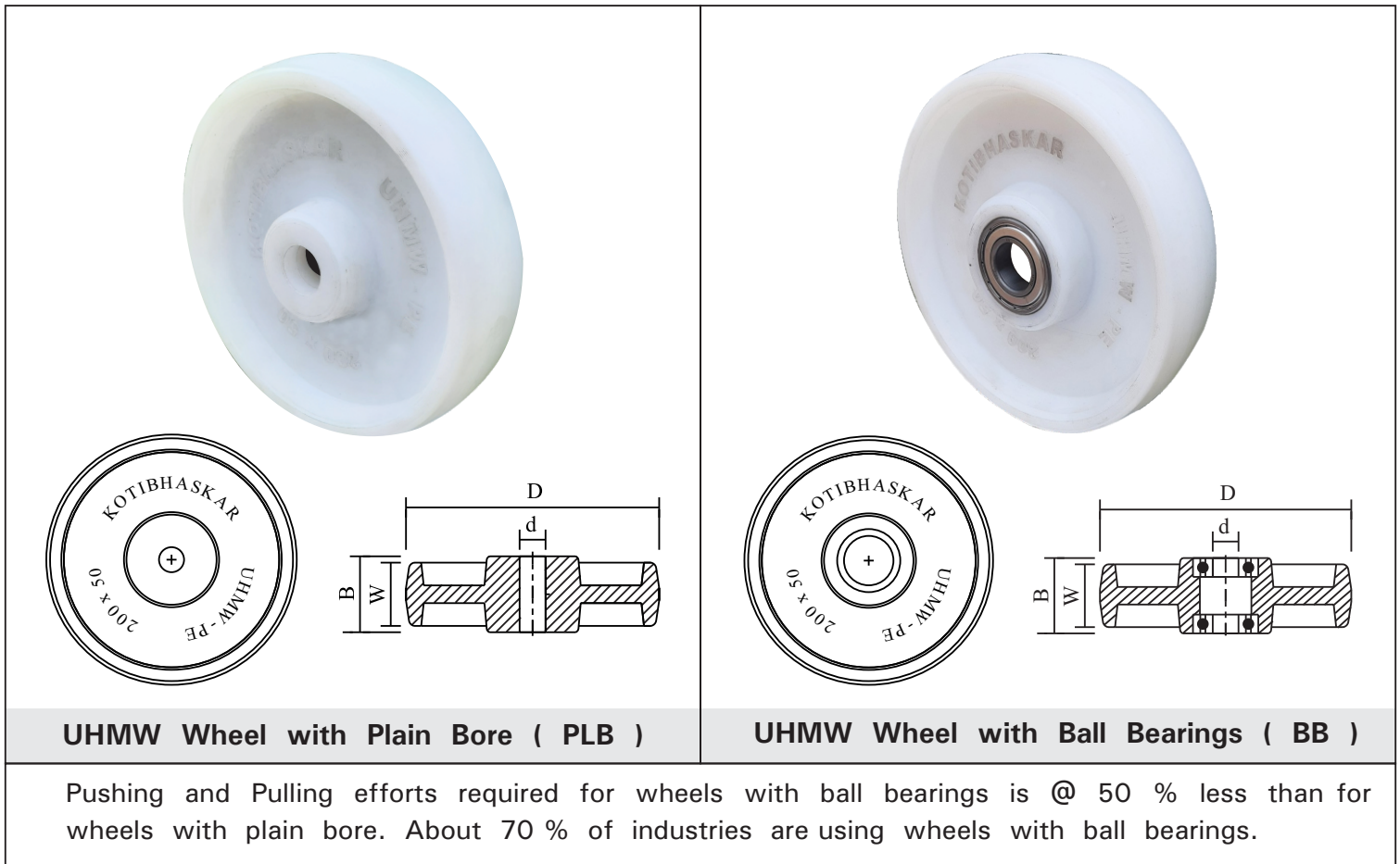


**CENTRAL STORES - A**

## CONTENTS

No.	Particulars	Page	Products
1.	Ultra High Molecular Weight Polyethylene ( UHMW Wheels )	04 - 05	
2.	Polyurethane Wheels with Cast Iron Core ( PU - CI Wheels )	06 - 07	
3.	Cast Iron Wheels ( CI Wheels )	08 - 09	
4.	Mild Steel Solid Track Wheels ( MS - VG / MS - SQ / MS - RO / MS - FL )	10 - 11	
5.	Medium Duty Pressed Steel Castors ( MD Castors )	12 - 13	
6.	Medium Heavy Duty Castors ( MHD Castors )	14 - 15	
7.	Heavy Duty Castors ( HD Castors )	16 - 17	
8.	Heavy Duty Twin Castors ( HD Twin Castors )	18 - 19	
9.	Applications of Wheels & Castors	20 - 21	
10.	Selection Criteria For Wheels & Castors	22	
11.	Ordering Format For Wheels & Castors	23	UHMW - FX - HD - 300 x 50 x 25 - BB UHMW - SW - HD - 300 x 50 x 25 - BB - BR

**UHMW - PE Wheels ( UHMW WHEEL )**



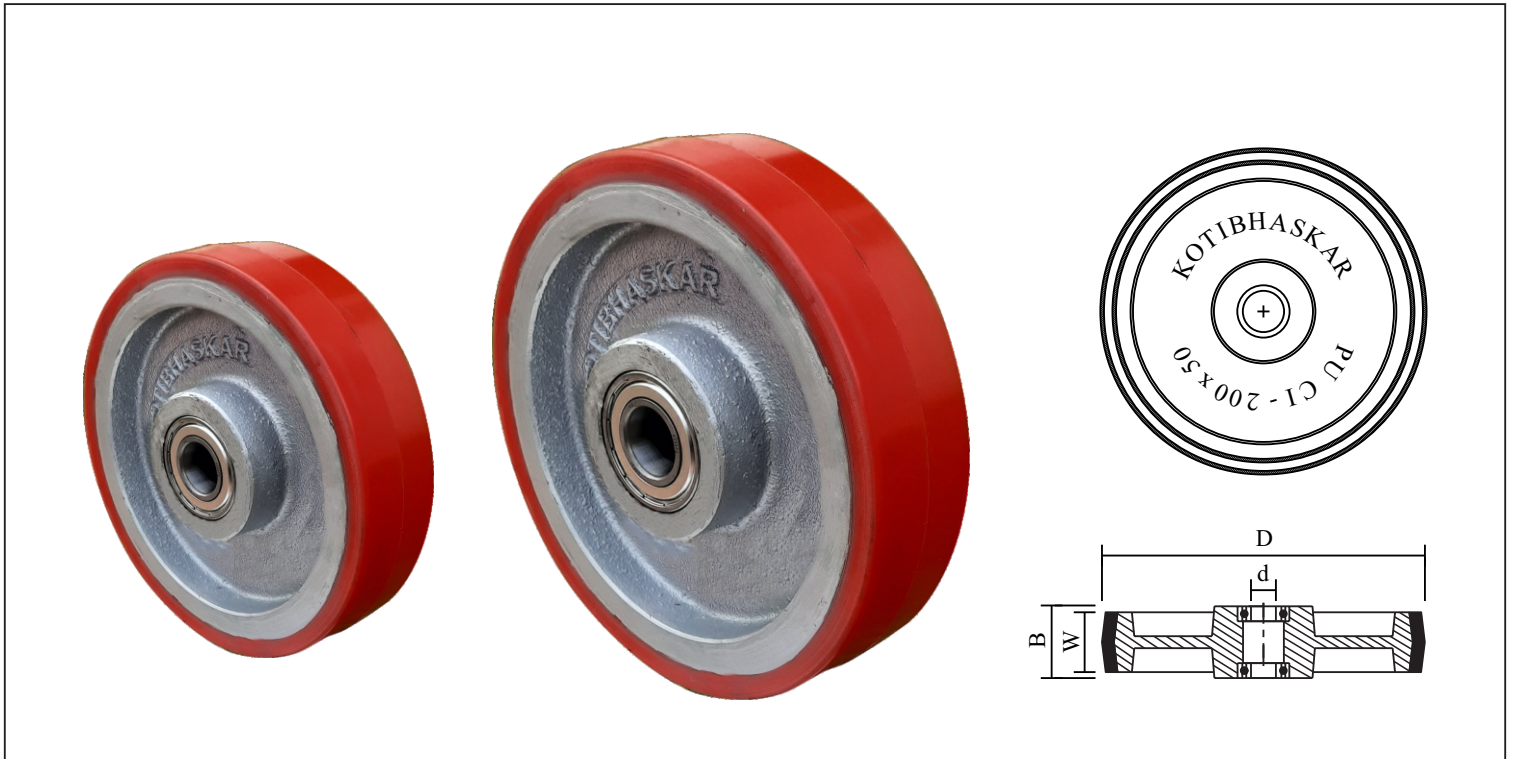
1. These wheels are manufactured from virgin, Ultra High Molecular Weight Polyethylene ( UHMW - PE ) powder, white in colour by high pressure compression moulding.
2. These wheels have unique features like,
  - \* High load carrying capacity
  - \* Excellent wear resistance
  - \* High impact strength
  - \* High cut to tear ratio
  - \* Low rolling & starting friction
  - \* High resistance to oil, grease, chemicals
  - \* Avoid damages to floor
  - \* Maximum Working Temperature - 70° C
  - \* Hardness - @ 75 Shore D
3. These wheels does not crack under heavy loads or under impact loads which may happen for polypropelene or for nylon wheels.

* UHMW - PE Rollers ( UHMW )				UHMW Roller with Ball Bearings ( BB )
Roller Size D x W mm	Bore - ID d mm	Bearing Number	Load Cap Kg	
80 x 70	20	6204	500	
80 x 85	20	6204	550	
80 x 90	20	6204	550	
80 x 96	20	6204	600	
80 x 100	20	6204	600	

**UHMW - PE Wheels ( UHMW WHEEL )**

No.	Description	Wheel Size D x W mm	Boss Width B mm	Bore - ID d mm	Bearing Number	Load Cap Kg
01	UHMW - WHEEL - 50 x 25 x 12 - PLB	50 x 25	30	12	---	60
02	UHMW - WHEEL - 50 x 25 x 12 - BB	50 x 25	30	12	6001	60
03	UHMW - WHEEL - 63 x 25 x 12 - PLB	63 x 25	30	12	---	80
04	UHMW - WHEEL - 63 x 25 x 12 - BB	63 x 25	30	12	6001	80
05	UHMW - WHEEL - 75 x 25 x 12 - PLB	75 x 25	30	12	---	100
06	UHMW - WHEEL - 75 x 25 x 12 - BB	75 x 25	30	12	6001	100
07	UHMW - WHEEL - 75 x 32 x 15 - PLB	75 x 32	40	15	---	150
08	UHMW - WHEEL - 75 x 32 x 15 - BB	75 x 32	40	15	6202	150
09	UHMW - WHEEL - 100 x 32 x 15 - PLB	100 x 32	40	15	---	200
10	UHMW - WHEEL - 100 x 32 x 15 - BB	100 x 32	40	15	6202	200
11	UHMW - WHEEL - 125 x 32 x 15 - PLB	125 x 32	40	15	---	250
12	UHMW - WHEEL - 125 x 32 x 15 - BB	125 x 32	40	15	6202	250
13	UHMW - WHEEL - 100 x 40 x 20 - PLB	100 x 40	50	20	---	250
14	UHMW - WHEEL - 100 x 40 x 20 - BB	100 x 40	50	20	6004	250
15	UHMW - WHEEL - 125 x 40 x 20 - PLB	125 x 40	50	20	---	300
16	UHMW - WHEEL - 125 x 40 x 20 - BB	125 x 40	50	20	6004	300
17	UHMW - WHEEL - 150 x 40 x 20 - PLB	150 x 40	50	20	---	350
18	UHMW - WHEEL - 150 x 40 x 20 - BB	150 x 40	50	20	6004	350
19	UHMW - WHEEL - 200 x 40 x 20 - PLB	200 x 40	50	20	---	400
20	UHMW - WHEEL - 200 x 40 x 20 - BB	200 x 40	50	20	6004	400
21	UHMW - WHEEL - 100 x 50 x 25 - PLB	100 x 50	60	25	---	300
22	UHMW - WHEEL - 100 x 50 x 20 - BB	100 x 50	60	20	6004	300
23	UHMW - WHEEL - 100 x 50 x 25 - BB	100 x 50	60	25	6205	300
24	UHMW - WHEEL - 125 x 50 x 25 - PLB	125 x 50	60	25	---	400
25	UHMW - WHEEL - 125 x 50 x 20 - BB	125 x 50	60	20	6004	400
26	UHMW - WHEEL - 125 x 50 x 25 - BB	125 x 50	60	25	6205	400
27	UHMW - WHEEL - 150 x 50 x 25 - PLB	150 x 50	60	25	---	500
28	UHMW - WHEEL - 150 x 50 x 20 - BB	150 x 50	60	20	6004	500
29	UHMW - WHEEL - 150 x 50 x 25 - BB	150 x 50	60	25	6205	500
30	UHMW - WHEEL - 200 x 50 x 25 - PLB	200 x 50	60	25	---	600
31	UHMW - WHEEL - 200 x 50 x 20 - BB	200 x 50	60	20	6004	600
32	UHMW - WHEEL - 200 x 50 x 25 - BB	200 x 50	60	25	6205	600
33	UHMW - WHEEL - 250 x 50 x 25 - BB	250 x 50	60	25	6205	900
34	UHMW - WHEEL - 300 x 50 x 25 - BB	300 x 50	60	25	6205	1000
35	UHMW - WHEEL - 150 x 75 x 25 - BB	150 x 75	90	25	6205	900
36	UHMW - WHEEL - 200 x 75 x 25 - BB	200 x 75	90	25	6205	1100
37	UHMW - WHEEL - 250 x 75 x 25 - BB	250 x 75	90	25	6205	1300
38	UHMW - WHEEL - 300 x 75 x 25 - BB	300 x 75	90	25	6205	1500
39	UHMW - WHEEL - 180 x 50 x 20 - BB	180 x 50	60	20	6204	500

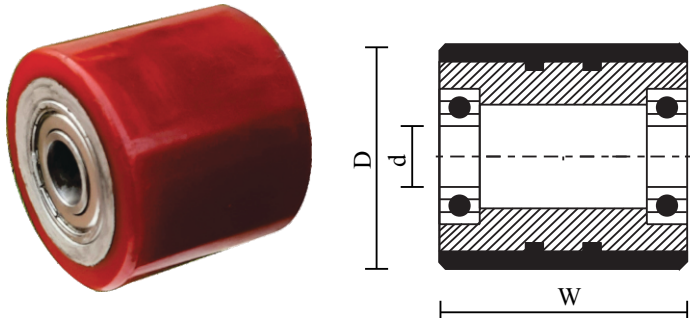
**POLYURETHANE WHEELS WITH CAST IRON CORE - ( PU - CI WHEEL )**



**PU - CI Wheel with Ball Bearings ( BB )**

Pushing and Pulling efforts required for wheels with ball bearings is @ 50 % less than for wheels with plain bore. About 70 % of industries are using wheels with ball bearings.

- These wheels are manufactured by casting process where Polyurethane is Bonded / Moulded over Cast Iron core to form PU - CI Wheel
- These wheels have unique features like,
  - \* High load carrying capacity
  - \* High impact strength
  - \* Low rolling & starting friction
  - \* Avoid damages to floor
  - \* Hardness - @ 95 Shore A
  - \* Excellent wear resistance
  - \* High cut to tear ratio
  - \* High Resistance to oil, grease, chemicals
  - \* Maximum Working Temperature - 70° C
- These wheels are widely used in variety of material handling equipments like Pallet Trucks, Stackers, Drum Tilters, Floor Cranes, Battery operated material handling equipments & trolleys.

* PU - CI Rollers				
Roller Size D x W mm	Bore - ID d mm	Bearing Number	Load Cap Kg	
80 x 70	20	6204	500	
80 x 85	20	6204	550	
80 x 90	20	6204	550	
80 x 96	20	6204	600	
80 x 100	20	6204	600	

**POLYURETHANE WHEELS WITH CAST IRON CORE - ( PU - CI WHEEL )**

No.	Description	Wheel Size D x W mm	Boss Width B mm	Bore - ID d mm	Bearing Number	Load Cap Kg
01	PU - CI - WHEEL - 50 x 25 x 12 - BB	50 x 25	30	12	6001	60
02	PU - CI - WHEEL - 63 x 25 x 12 - BB	63 x 25	30	12	6001	80
03	PU - CI - WHEEL - 75 x 25 x 12 - BB	75 x 25	30	12	6001	100
04	PU - CI - WHEEL - 75 x 32 x 15 - BB	75 x 32	40	15	6202	150
05	PU - CI - WHEEL - 100 x 32 x 15 - BB	100 x 32	40	15	6202	200
06	PU - CI - WHEEL - 125 x 32 x 15 - BB	125 x 32	40	15	6202	250
07	PU - CI - WHEEL - 100 x 40 x 20 - BB	100 x 40	50	20	6004	250
08	PU - CI - WHEEL - 125 x 40 x 20 - BB	125 x 40	50	20	6004	300
09	PU - CI - WHEEL - 150 x 40 x 20 - BB	150 x 40	50	20	6004	350
10	PU - CI - WHEEL - 200 x 40 x 20 - BB	200 x 40	50	20	6004	400
11	PU - CI - WHEEL - 100 x 50 x 25 - BB	100 x 50	60	25	6205	300
12	PU - CI - WHEEL - 125 x 50 x 25 - BB	125 x 50	60	25	6205	400
13	PU - CI - WHEEL - 150 x 50 x 25 - BB	150 x 50	60	25	6205	500
14	PU - CI - WHEEL - 200 x 50 x 25 - BB	200 x 50	60	25	6205	600
15	PU - CI - WHEEL - 250 x 50 x 25 - BB	250 x 50	60	25	6205	900
16	PU - CI - WHEEL - 300 x 50 x 25 - BB	300 x 50	60	25	6205	1000
17	PU - CI - WHEEL - 150 x 75 x 25 - BB	150 x 75	90	25	6205	900
18	PU - CI - WHEEL - 200 x 75 x 25 - BB	200 x 75	90	25	6205	1100
19	PU - CI - WHEEL - 250 x 75 x 25 - BB	250 x 75	90	25	6205	1300
20	PU - CI - WHEEL - 300 x 75 x 25 - BB	300 x 75	90	25	6205	1500
21	PU - CI - WHEEL - 180 x 50 x 20 - BB	180 x 50	60	20	6204	500

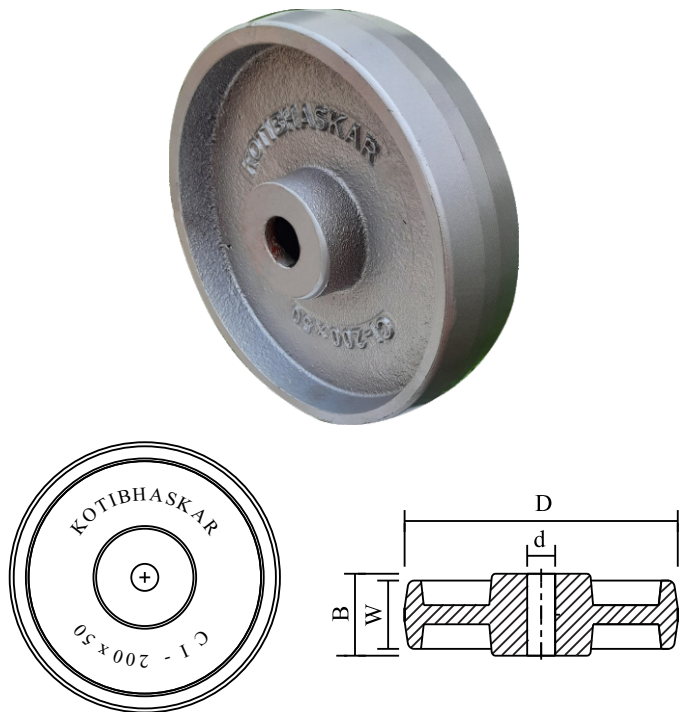
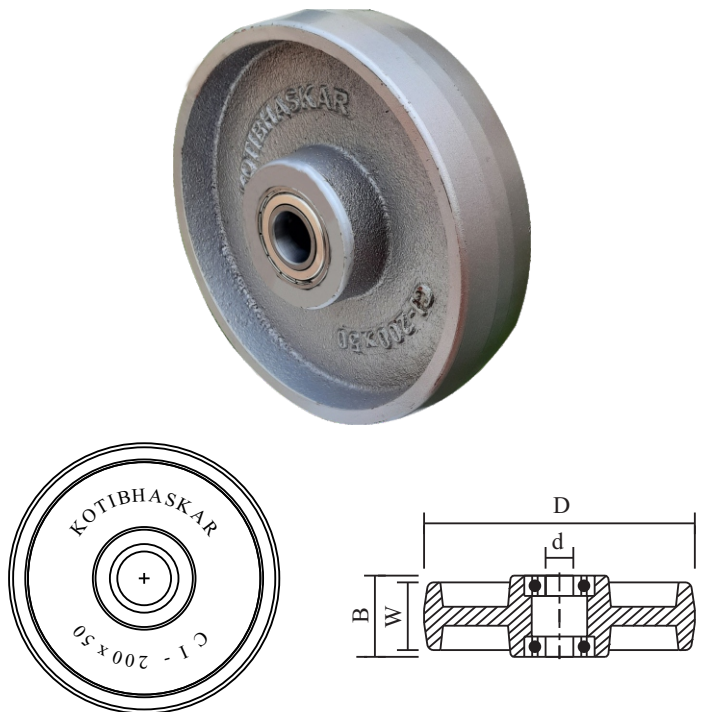
\* Polyurethane with high abrasion resistance bonded over cast iron core.

\* Polyurethane wheels are manufactured by casting process.

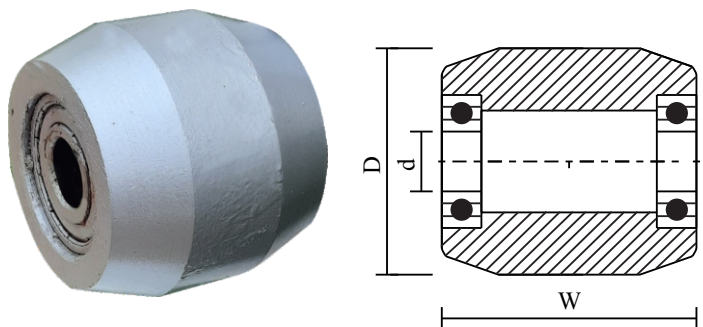
\* The properties of cast polyurethane are much better than that of injection moulded polyurethane.

\* The load capacity and service life of wheels is more than that of injection moulded polyurethane.

**CAST IRON WHEELS ( CI WHEEL )**

	
<b>CI Wheel with Plain Bore ( PLB )</b>	<b>CI Wheel with Ball Bearings ( BB )</b>
<p>Pushing and Pulling efforts required for wheels with ball bearings is @ 50 % less than for wheels with plain bore. About 70 % of industries are using wheels with ball bearings.</p>	

1. These wheels are manufactured from good quality graded casting, machinable & free from blow holes.
2. These wheels have unique features like,
  - \* High load carrying capacity
  - \* Excellent wear resistance
  - \* High temperature application
  - \* Low rolling & starting friction
  - \* Hardness - @ 175 BHN
  - \* Maximum Working Temperature - 250° C
  - \* Casting Grade - FG 200
3. Cast iron wheels have high load carrying capacity with excellent wear resistance.
4. These wheels are suitable for high temperature applications like in ovens, in foundries etc.
5. These wheels make noise during movement & being very hard may cause damage to shop floor.

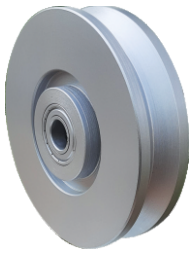
* CI Rollers				CI Roller with Ball Bearings ( BB )
<b>Roller Size D x W mm</b>	<b>Bore - ID d mm</b>	<b>Bearing Number</b>	<b>Load Cap Kg</b>	
80 x 70	20	6204	800	
80 x 85	20	6204	900	
80 x 90	20	6204	900	
80 x 96	20	6204	1000	
80 x 100	20	6204	1000	



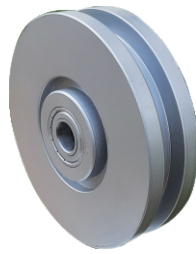
**CAST IRON WHEELS ( CI WHEEL )**

No.	Description	Wheel Size D x W mm	Boss Width B mm	Bore - ID d mm	Bearing Number	Load Cap Kg
01	CI - WHEEL - 50 x 25 x 12 - PLB	50 x 25	30	12	---	100
02	CI - WHEEL - 50 x 25 x 12 - BB	50 x 25	30	12	6001	100
03	CI - WHEEL - 63 x 25 x 12 - PLB	63 x 25	30	12	---	130
04	CI - WHEEL - 63 x 25 x 12 - BB	63 x 25	30	12	6001	130
05	CI - WHEEL - 75 x 25 x 12 - PLB	75 x 25	30	12	---	160
06	CI - WHEEL - 75 x 25 x 12 - BB	75 x 25	30	12	6001	160
07	CI - WHEEL - 75 x 32 x 15 - PLB	75 x 32	40	15	---	200
08	CI - WHEEL - 75 x 32 x 15 - BB	75 x 32	40	15	6202	200
09	CI - WHEEL - 100 x 32 x 15 - PLB	100 x 32	40	15	---	300
10	CI - WHEEL - 100 x 32 x 15 - BB	100 x 32	40	15	6202	300
11	CI - WHEEL - 125 x 32 x 15 - PLB	125 x 32	40	15	---	400
12	CI - WHEEL - 125 x 32 x 15 - BB	125 x 32	40	15	6202	400
13	CI - WHEEL - 100 x 40 x 20 - PLB	100 x 40	50	20	---	400
14	CI - WHEEL - 100 x 40 x 20 - BB	100 x 40	50	20	6004	400
15	CI - WHEEL - 125 x 40 x 20 - PLB	125 x 40	50	20	---	500
16	CI - WHEEL - 125 x 40 x 20 - BB	125 x 40	50	20	6004	500
17	CI - WHEEL - 150 x 40 x 20 - PLB	150 x 40	50	20	---	600
18	CI - WHEEL - 150 x 40 x 20 - BB	150 x 40	50	20	6004	600
19	CI - WHEEL - 200 x 40 x 20 - PLB	200 x 40	50	20	---	800
20	CI - WHEEL - 200 x 40 x 20 - BB	200 x 40	50	20	6004	800
21	CI - WHEEL - 100 x 50 x 25 - PLB	100 x 50	60	25	---	500
22	CI - WHEEL - 100 x 50 x 20 - BB	100 x 50	60	20	6004	500
23	CI - WHEEL - 100 x 50 x 25 - BB	100 x 50	60	25	6205	500
24	CI - WHEEL - 125 x 50 x 25 - PLB	125 x 50	60	25	---	600
25	CI - WHEEL - 125 x 50 x 20 - BB	125 x 50	60	20	6004	600
26	CI - WHEEL - 125 x 50 x 25 - BB	125 x 50	60	25	6205	600
27	CI - WHEEL - 150 x 50 x 25 - PLB	150 x 50	60	25	---	700
28	CI - WHEEL - 150 x 50 x 20 - BB	150 x 50	60	20	6004	700
29	CI - WHEEL - 150 x 50 x 25 - BB	150 x 50	60	25	6205	700
30	CI - WHEEL - 200 x 50 x 25 - PLB	200 x 50	60	25	---	900
31	CI - WHEEL - 200 x 50 x 20 - BB	200 x 50	60	20	6004	900
32	CI - WHEEL - 200 x 50 x 25 - BB	200 x 50	60	25	6205	900
33	CI - WHEEL - 250 x 50 x 25 - BB	250 x 50	60	25	6205	1100
34	CI - WHEEL - 300 x 50 x 25 - BB	300 x 50	60	25	6205	1400
35	CI - WHEEL - 150 x 75 x 25 - BB	150 x 75	90	25	6205	1000
36	CI - WHEEL - 200 x 75 x 25 - BB	200 x 75	90	25	6205	1300
37	CI - WHEEL - 250 x 75 x 25 - BB	250 x 75	90	25	6205	1600
38	CI - WHEEL - 300 x 75 x 25 - BB	300 x 75	90	25	6205	2000
39	CI - WHEEL - 180 x 50 x 20 - BB	180 x 50	60	20	6204	800

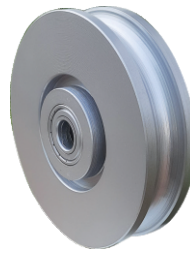
**MILD STEEL SOLID TRACK WHEELS**



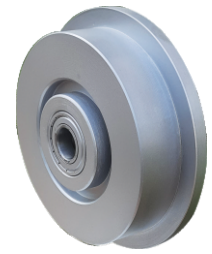
**V Groove  
MS - VG**



**Square Groove  
MS - SQ**

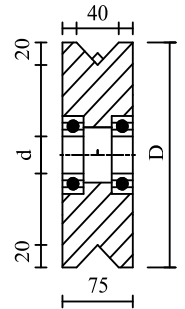
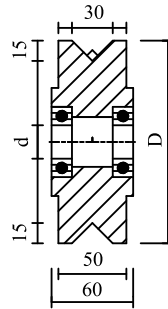
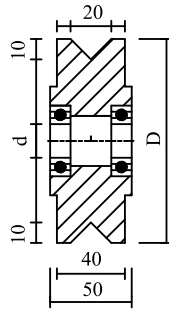
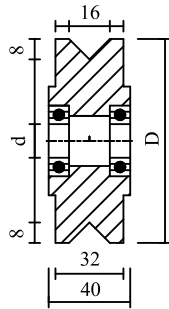
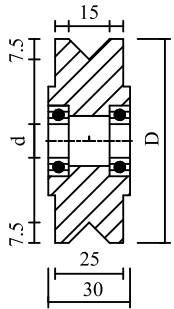


**Round Groove  
MS - RO**

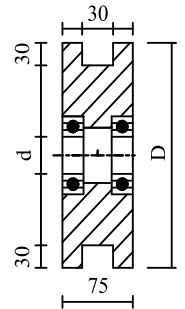
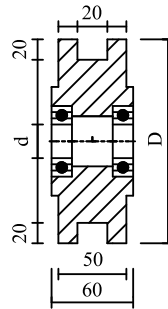
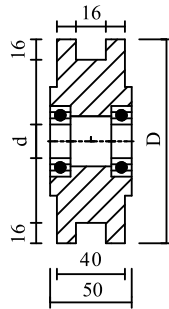
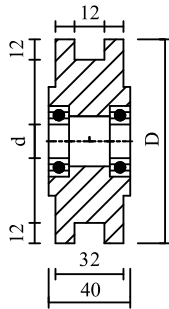
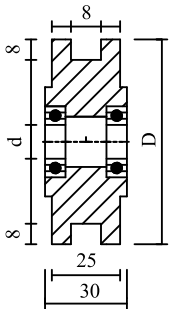


**Flange Type  
MS - FL**

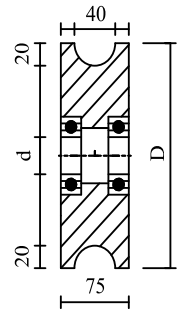
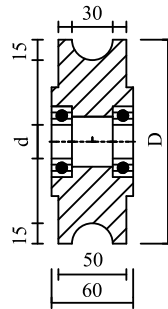
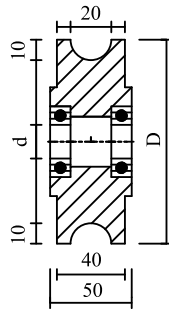
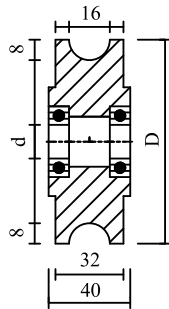
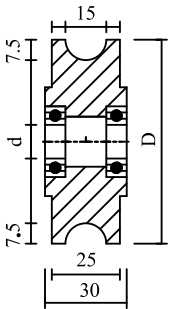
**MS - VG WHEELS**



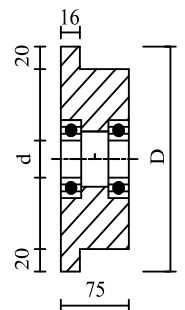
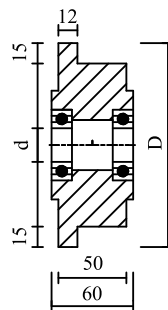
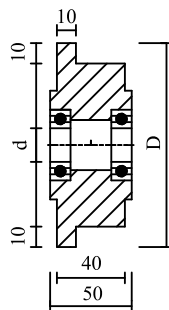
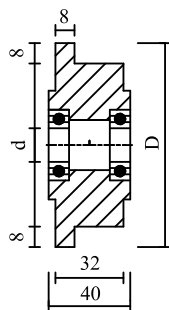
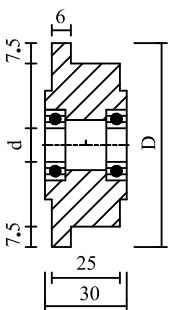
**MS - SQ WHEELS**



**MS - RO WHEELS**



**MS - FL WHEELS**



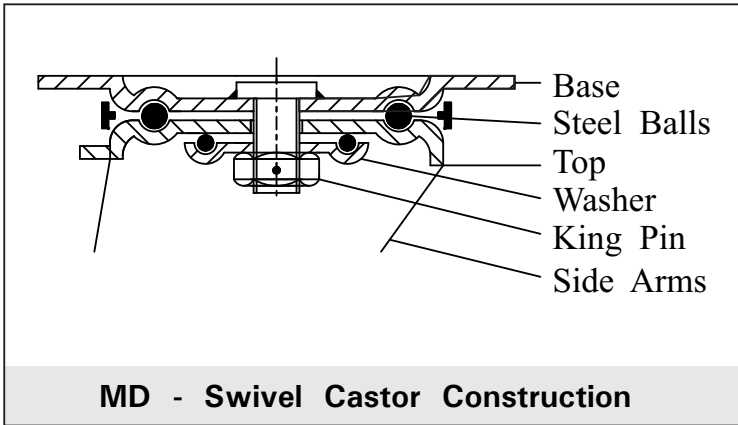
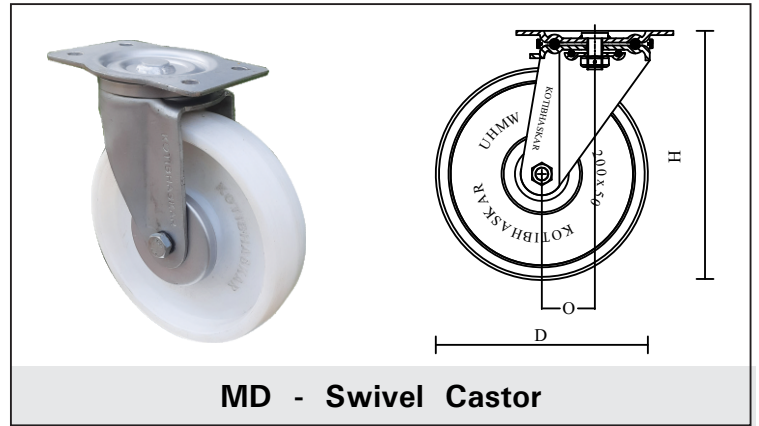
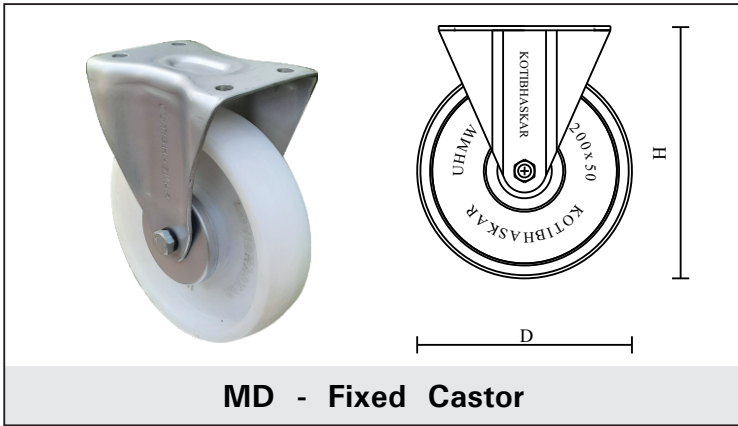
**MILD STEEL SOLID TRACK WHEELS**

Available with ( MS - VG ) / ( MS - SQ ) / ( MS - RO ) / ( MS - FL )

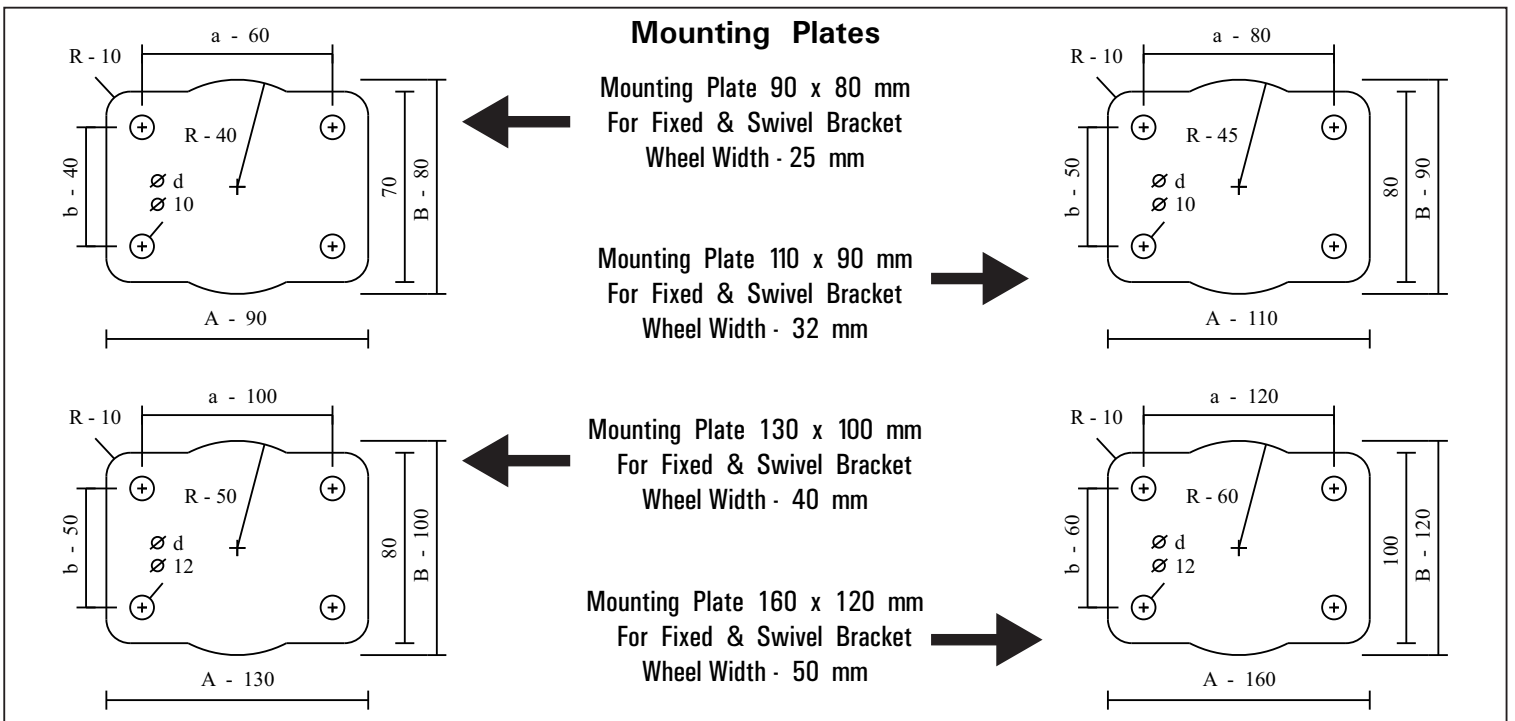
No.	Description	Wheel Size D x W mm	Boss Width B mm	Bore - ID d mm	Bearing Number	Load Cap Kg
01	MS - VG - WHEEL - 50 x 25 x 12 - PLB	50 x 25	30	12	---	100
02	MS - VG - WHEEL - 50 x 25 x 12 - BB	50 x 25	30	12	6001	100
03	MS - VG - WHEEL - 63 x 25 x 12 - PLB	63 x 25	30	12	---	130
04	MS - VG - WHEEL - 63 x 25 x 12 - BB	63 x 25	30	12	6001	130
05	MS - VG - WHEEL - 75 x 25 x 12 - PLB	75 x 25	30	12	---	160
06	MS - VG - WHEEL - 75 x 25 x 12 - BB	75 x 25	30	12	6001	160
07	MS - VG - WHEEL - 75 x 32 x 15 - PLB	75 x 32	40	15	---	200
08	MS - VG - WHEEL - 75 x 32 x 15 - BB	75 x 32	40	15	6202	200
09	MS - VG - WHEEL - 100 x 32 x 15 - PLB	100 x 32	40	15	---	300
10	MS - VG - WHEEL - 100 x 32 x 15 - BB	100 x 32	40	15	6202	300
11	MS - VG - WHEEL - 125 x 32 x 15 - PLB	125 x 32	40	15	---	400
12	MS - VG - WHEEL - 125 x 32 x 15 - BB	125 x 32	40	15	6202	400
13	MS - VG - WHEEL - 100 x 40 x 20 - PLB	100 x 40	50	20	---	400
14	MS - VG - WHEEL - 100 x 40 x 20 - BB	100 x 40	50	20	6004	400
15	MS - VG - WHEEL - 125 x 40 x 20 - PLB	125 x 40	50	20	---	500
16	MS - VG - WHEEL - 125 x 40 x 20 - BB	125 x 40	50	20	6004	500
17	MS - VG - WHEEL - 150 x 40 x 20 - PLB	150 x 40	50	20	---	600
18	MS - VG - WHEEL - 150 x 40 x 20 - BB	150 x 40	50	20	6004	600
19	MS - VG - WHEEL - 200 x 40 x 20 - PLB	200 x 40	50	20	---	800
20	MS - VG - WHEEL - 200 x 40 x 20 - BB	200 x 40	50	20	6004	800
21	MS - VG - WHEEL - 100 x 50 x 25 - PLB	100 x 50	60	25	---	500
22	MS - VG - WHEEL - 100 x 50 x 25 - BB	100 x 50	60	25	6205	500
23	MS - VG - WHEEL - 125 x 50 x 25 - PLB	125 x 50	60	25	---	600
24	MS - VG - WHEEL - 125 x 50 x 25 - BB	125 x 50	60	25	6205	600
25	MS - VG - WHEEL - 150 x 50 x 25 - PLB	150 x 50	60	25	---	700
26	MS - VG - WHEEL - 150 x 50 x 25 - BB	150 x 50	60	25	6205	700
27	MS - VG - WHEEL - 200 x 50 x 25 - PLB	150 x 50	60	25	---	900
28	MS - VG - WHEEL - 200 x 50 x 25 - BB	200 x 50	60	25	6205	900
29	MS - VG - WHEEL - 250 x 50 x 25 - BB	250 x 50	60	25	6205	1100
30	MS - VG - WHEEL - 300 x 50 x 25 - BB	300 x 50	60	25	6205	1400
31	MS - VG - WHEEL - 150 x 75 x 25 - BB	150 x 75	75	25	6205	1000
32	MS - VG - WHEEL - 200 x 75 x 25 - BB	200 x 75	75	25	6205	1300
33	MS - VG - WHEEL - 250 x 75 x 25 - BB	250 x 75	75	25	6205	1600
34	MS - VG - WHEEL - 300 x 75 x 25 - BB	300 x 75	75	25	6205	2000

\* Load Carrying Capacity of Wheels with V groove, Square groove, Round groove & Flange type is same.  
( Maximum working temperature - 250° C )

**MEDIUM DUTY PRESSED STEEL CASTORS ( MD SERIES )**



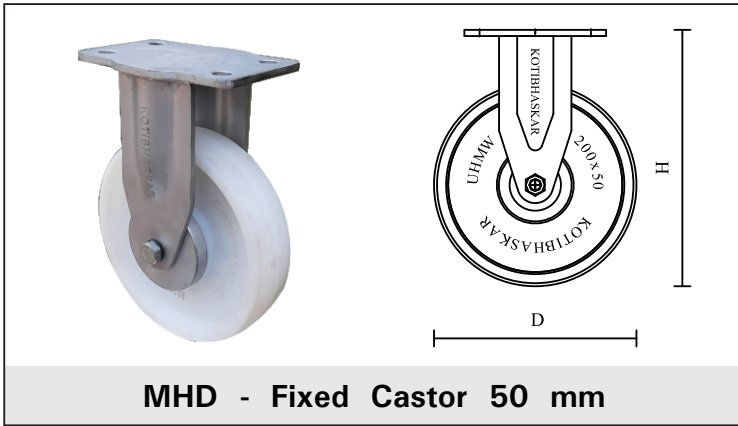
1. Medium Duty Fixed Brackets are manufactured from tested m. s. plates, cutting & forming on hydraulic press with emboss for high strength.
2. Medium Duty Swivel Brackets are manufactured from tested m. s. plates, cutting & forming on hydraulic press with emboss for high strength. Base, top & washer are assembled together with threaded king pin & steel balls between them. Protective dust preventive ring is provided around steel balls.



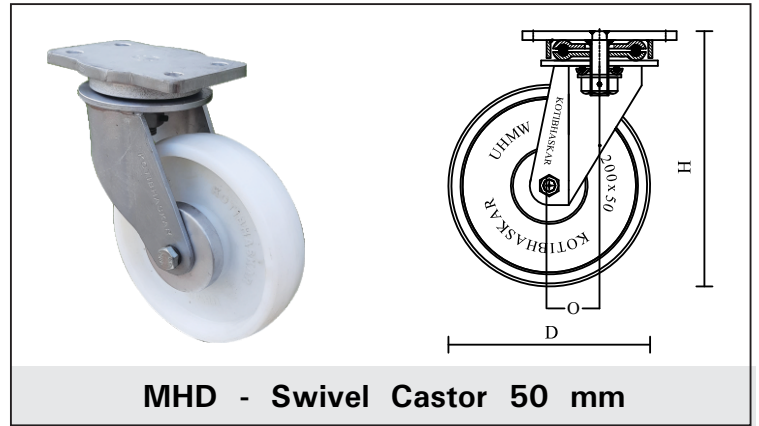
**MEDIUM DUTY PRESSED STEEL CASTORS ( MD SERIES )**

No.	Castor Size Wheel D x W mm	Height H mm	Offset O	Mounting Plate			Load Carring Capacity Kg			
				A x B mm	a x b mm	d	UHMW	PU-CI	CI	MS-TR
01	FX - MD - 50 x 25	70	0	90 x 80	60 x 40	10	60	60	60	60
02	SW - MD - 50 x 25	70	35	90 x 80	60 x 40	10	60	60	60	60
03	FX - MD - 63 x 25	85	0	90 x 80	60 x 40	10	80	80	80	80
04	SW - MD - 63 x 25	85	35	90 x 80	60 x 40	10	80	80	80	80
05	FX - MD - 75 x 25	100	0	90 x 80	60 x 40	10	100	100	100	100
06	SW - MD - 75 x 25	100	35	90 x 80	60 x 40	10	100	100	100	100
07	FX - MD - 75 x 32	105	0	110 x 90	80 x 50	10	120	120	120	120
08	SW - MD - 75 x 32	105	40	110 x 90	80 x 50	10	120	120	120	120
09	FX - MD - 100 x 32	130	0	110 x 90	80 x 50	10	150	150	150	150
10	SW - MD - 100 x 32	130	40	110 x 90	80 x 50	10	150	150	150	150
11	FX - MD - 125 x 32	155	0	110 x 90	80 x 50	10	200	200	200	200
12	SW - MD - 125 x 32	155	40	110 x 90	80 x 50	10	200	200	200	200
13	FX - MD - 100 x 40	140	0	130 x 100	100 x 50	12	200	200	200	200
14	SW - MD - 100 x 40	140	50	130 x 100	100 x 50	12	200	200	200	200
15	FX - MD - 125 x 40	165	0	130 x 100	100 x 50	12	250	250	250	250
16	SW - MD - 125 x 40	165	50	130 x 100	100 x 50	12	250	250	250	250
17	FX - MD - 150 x 40	185	0	130 x 100	100 x 50	12	300	300	300	300
18	SW - MD - 150 x 40	185	50	130 x 100	100 x 50	12	300	300	300	300
19	FX - MD - 200 x 40	235	0	130 x 100	100 x 50	12	350	350	350	350
20	SW - MD - 200 x 40	235	50	130 x 100	100 x 50	12	350	350	350	350
21	FX - MD - 100 x 50	140	0	160 x 120	120 x 60	12	300	300	300	300
22	SW - MD - 100 x 50	140	50	160 x 120	120 x 60	12	300	300	300	300
23	FX - MD - 125 x 50	165	0	160 x 120	120 x 60	12	350	350	350	350
24	SW - MD - 125 x 50	165	50	160 x 120	120 x 60	12	350	350	350	350
25	FX - MD - 150 x 50	185	0	160 x 120	120 x 60	12	400	400	400	400
26	SW - MD - 150 x 50	185	50	160 x 120	120 x 60	12	400	400	400	400
27	FX - MD - 200 x 50	235	0	160 x 120	120 x 60	12	500	500	500	500
28	SW - MD - 200 x 50	235	50	160 x 120	120 x 60	12	500	500	500	500

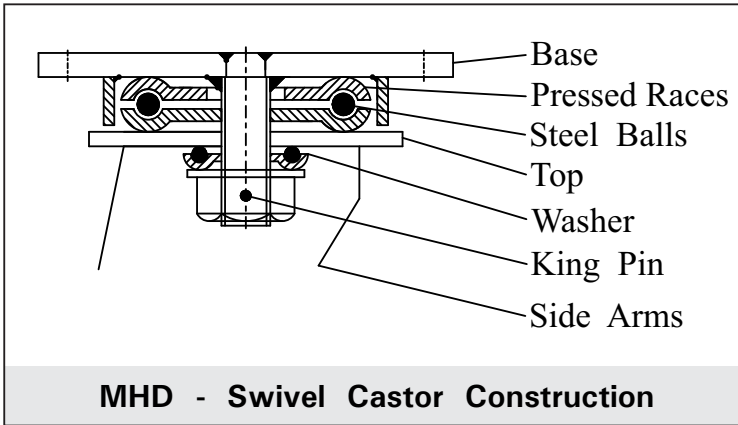
**MEDIUM HEAVY DUTY CASTORS ( MHD SERIES )**



**MHD - Fixed Castor 50 mm**



**MHD - Swivel Castor 50 mm**

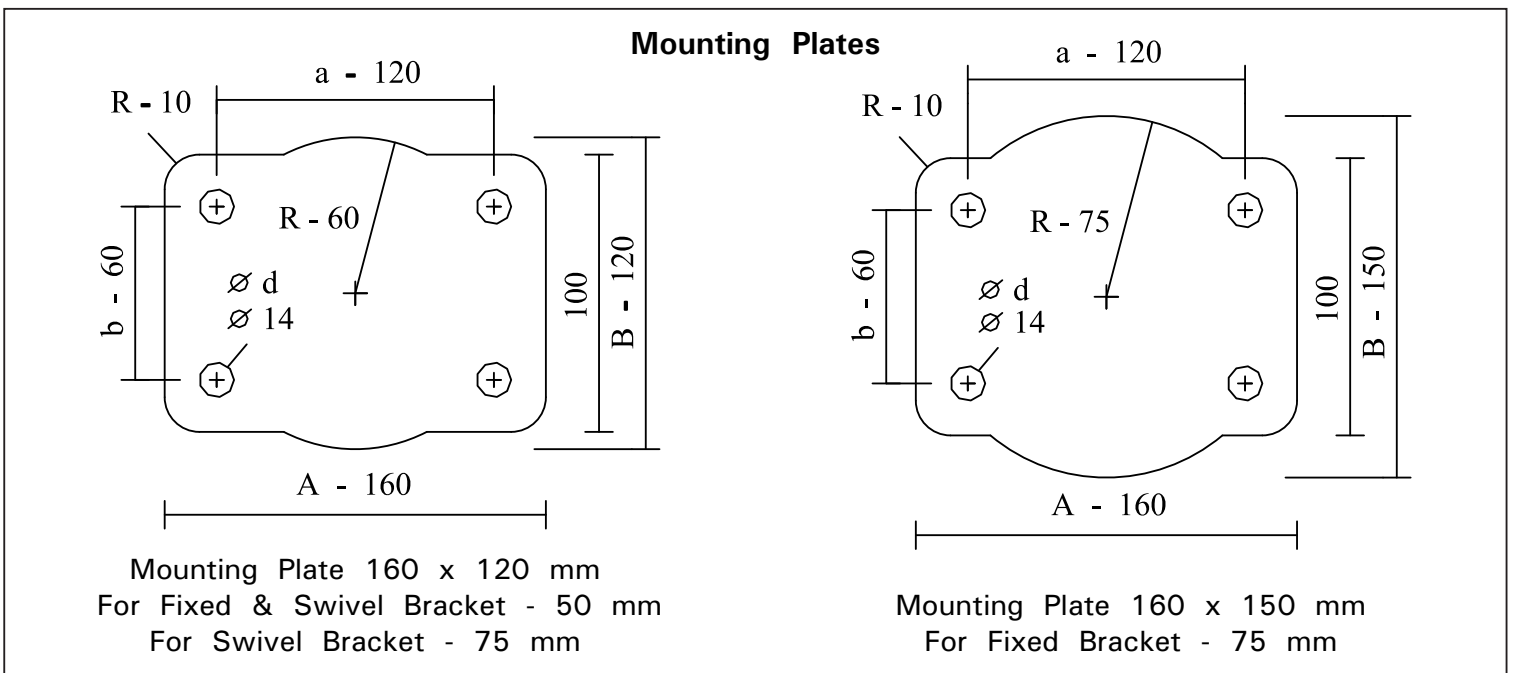


**MHD - Swivel Castor Construction**



**MHD - Swivel Castor with Brake & Swivel Lock**

1. Medium Heavy Duty Fixed Brackets are manufactured from tested m. s. plates, cutting, embossed on press machine for high strength & joined together by welding process.
2. Medium Heavy Duty Swivel Brackets are manufactured from tested m. s. plates, cutting, embossed on press machine for high strength & joined together by welding process. Base, top & washer are assembled together with heavy threaded king pin & steel balls between them. Protective dust preventive steel ring is provided around steel balls.



Mounting Plate 160 x 120 mm  
For Fixed & Swivel Bracket - 50 mm  
For Swivel Bracket - 75 mm

Mounting Plate 160 x 150 mm  
For Fixed Bracket - 75 mm

**MEDIUM HEAVY DUTY CASTORS ( MHD SERIES )**

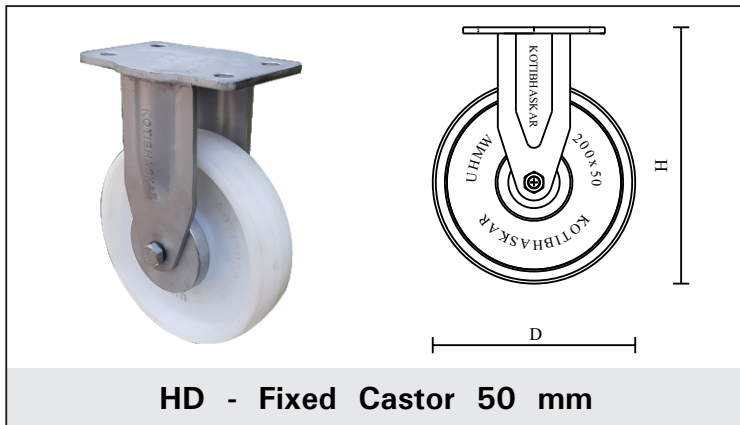
No.	Castor Size Wheel D x W mm	Height H mm	Offset O	Mounting Plate			Load Carring Capacity Kg			
				A x B mm	a x b mm	d	UHMW	PU-CI	CI	MS-TR
01	FX - MHD - 100 x 50	160	0	160 x 120	120 x 60	14	300	300	450	450
02	SW - MHD - 100 x 50	160	50	160 x 120	120 x 60	14	300	300	450	450
03	FX - MHD - 125 x 50	185	8	160 x 120	120 x 60	14	400	400	500	500
04	SW - MHD - 125 x 50	185	50	160 x 120	120 x 60	14	400	400	500	500
05	FX - MHD - 150 x 50	210	0	160 x 120	120 x 60	14	500	500	550	550
06	SW - MHD - 150 x 50	210	60	160 x 120	120 x 60	14	500	500	550	550
07	FX - MHD - 200 x 50	260	0	160 x 120	120 x 60	14	600	600	600	600
08	SW - MHD - 200 x 50	260	60	160 x 120	120 x 60	14	600	600	600	600
09	FX - MHD - 250 X 50	310	0	160 x 120	120 x 60	14	700	700	700	700
10	SW - MHD - 250 x 50	310	70	160 x 120	120 x 60	14	700	700	700	700
11	FX - MHD - 300 x 50	360	0	160 x 120	120 x 60	14	800	800	800	800
12	SW - MHD - 300 x 50	360	70	160 x 120	120 x 60	14	800	800	800	800
13	FX - MHD - 150 x 75	215	0	160 x 150	120 x 60	14	700	700	700	700
14	SW - MHD - 150 x 75	215	60	160 x 120	120 x 60	14	700	700	700	700
15	FX - MHD - 200 x 75	265	0	160 x 150	120 x 60	14	800	800	800	800
16	SW - MHD - 200 x 75	265	60	160 x 120	120 x 60	14	800	800	800	800
17	FX - MHD - 250 x 75	315	0	160 x 150	120 x 60	14	900	900	900	900
18	SW - MHD - 250 x 75	315	70	160 x 120	120 x 60	14	900	900	900	900
19	FX - MHD - 300 x 75	365	0	160 x 150	120 x 60	14	1000	1000	1000	1000
20	SW - MHD - 300 x 75	365	70	160 x 120	120 x 60	14	1000	1000	1000	1000



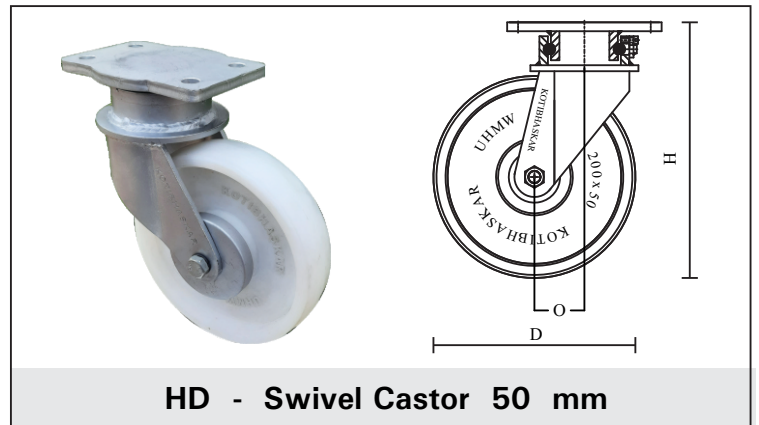
MHD - Castor 50 mm

MHD - Castor 75 mm

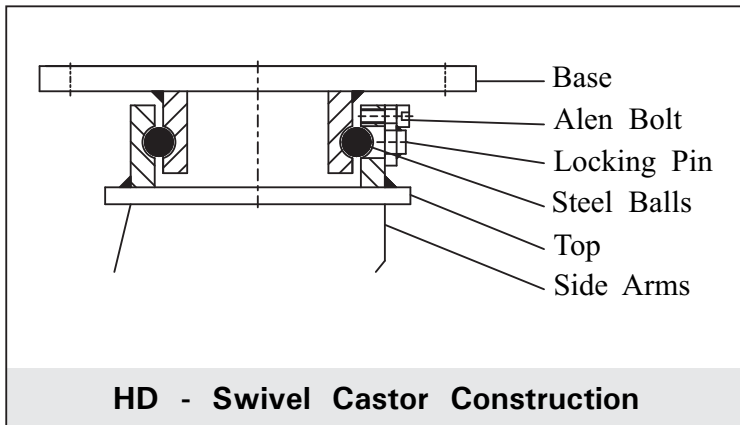
**HEAVY DUTY CASTORS ( HD SERIES )**



**HD - Fixed Castor 50 mm**



**HD - Swivel Castor 50 mm**

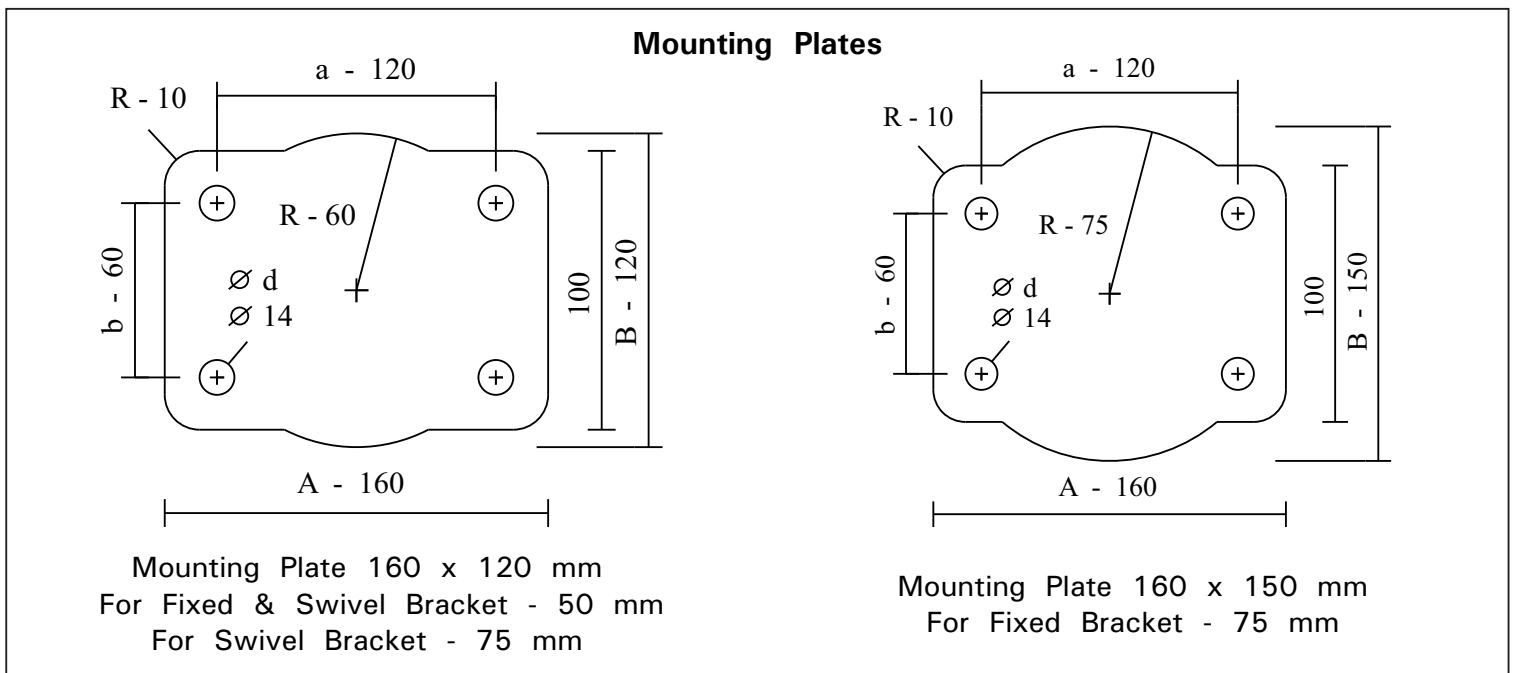


**HD - Swivel Castor Construction**



**HD - Swivel Castor with Brake**

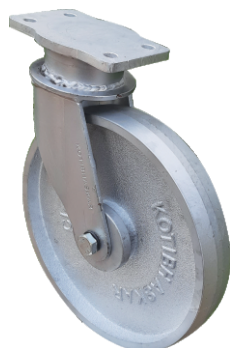
1. Heavy Duty Fixed Brackets are manufactured from tested m. s. plates, cutting, embossed on press machine for high strength & joined together by welding process.
2. Heavy Duty Swivel Brackets are manufactured from tested m. s. plates, cutting, embossed on press machine for high strength & joined together by welding process. Base & top are interlocked together with steel balls in machined ball races. These brackets are designed for heavy loads & long service life.





**HEAVY DUTY CASTORS ( HD SERIES )**

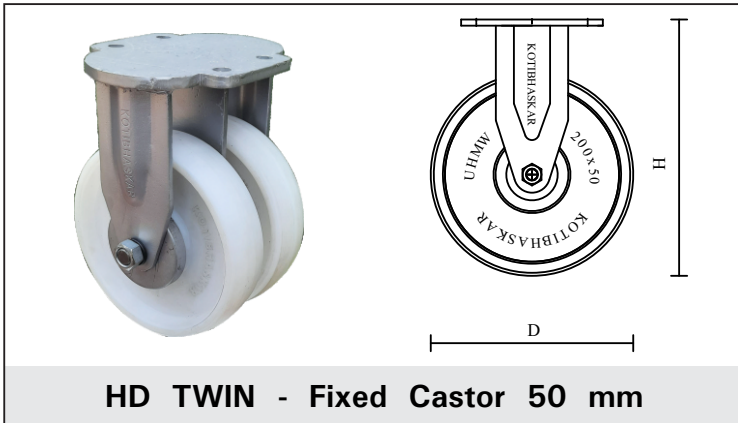
No.	Castor Size Wheel D x W mm	Height H mm	Offset O	Mounting Plate			Load Carring Capacity Kg			
				A x B mm	a x b mm	d	UHMW	PU-CI	CI	MS-TR
01	FX - HD - 100 x 50	160	0	160 x 120	120 x 60	14	300	300	500	500
02	SW - HD - 100 x 50	160	50	160 x 120	120 x 60	14	300	300	500	500
03	FX - HD - 125 x 50	185	0	160 x 120	120 x 60	14	400	400	600	600
04	SW - HD - 125 x 50	185	50	160 x 120	120 x 60	14	400	400	600	600
05	FX - HD - 150 x 50	210	0	160 x 120	120 x 60	14	500	500	700	700
06	SW - HD - 150 x 50	210	60	160 x 120	120 x 60	14	500	500	700	700
07	FX - HD - 200 x 50	260	0	160 x 120	120 x 60	14	600	600	900	900
08	SW - HD - 200 x 50	260	60	160 x 120	120 x 60	14	600	600	900	900
09	FX - HD - 250 x 50	310	0	160 x 120	120 x 60	14	700	900	1100	1100
10	SW - HD - 250 x 50	310	70	160 x 120	120 x 60	14	700	900	1100	1100
11	FX - HD - 300 x 50	360	0	160 x 120	120 x 60	14	800	1000	1200	1200
12	SW - HD - 300 x 50	360	70	160 x 120	120 x 60	14	800	1000	1200	1200
13	FX - HD - 150 x 75	215	0	160 x 150	120 x 60	14	700	900	1000	1000
14	SW - HD - 150 x 75	215	60	160 x 120	120 x 60	14	700	900	1000	1000
15	FX - HD - 200 x 75	265	0	160 x 150	120 x 60	14	800	1100	1200	1200
16	SW - HD - 200 x 75	265	60	160 x 120	120 x 60	14	800	1100	1200	1200
17	FX - HD - 250 x 75	315	0	160 x 150	120 x 60	14	900	1200	1200	1200
18	SW - HD - 250 x 75	315	70	160 x 120	120 x 60	14	900	1200	1200	1200
19	FX - HD - 300 x 75	365	0	160 x 150	120 x 60	14	1000	1200	1200	1200
20	SW - HD - 300 x 75	365	70	160 x 120	120 x 60	14	1000	1200	1200	1200



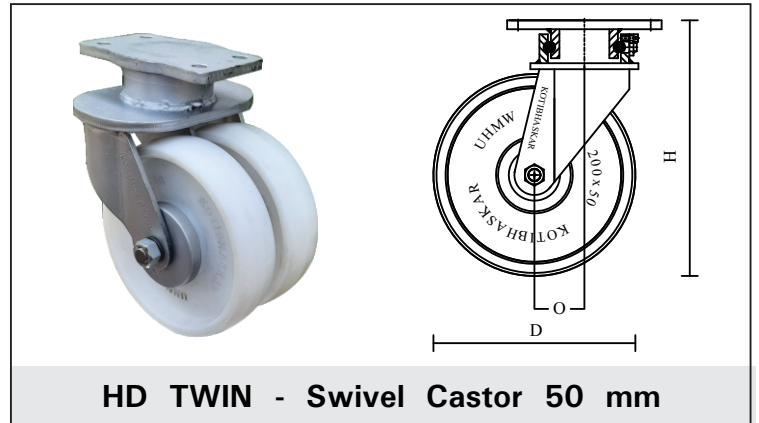
HD - Castor 50 mm

HD - Castor 75 mm

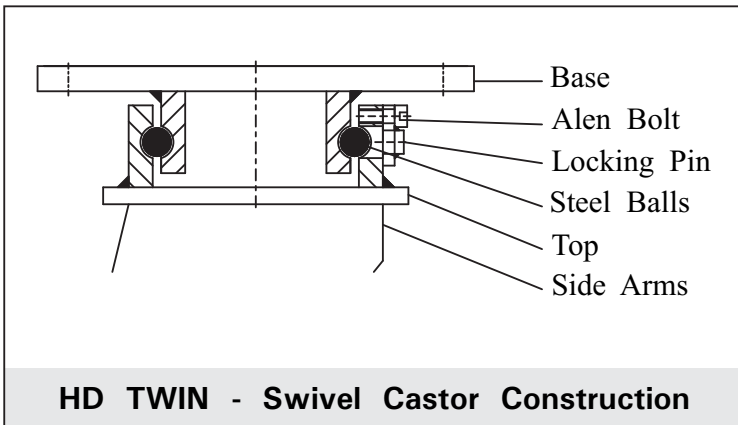
**HEAVY DUTY TWIN CASTORS ( HD TWIN SERIES )**



**HD TWIN - Fixed Castor 50 mm**



**HD TWIN - Swivel Castor 50 mm**

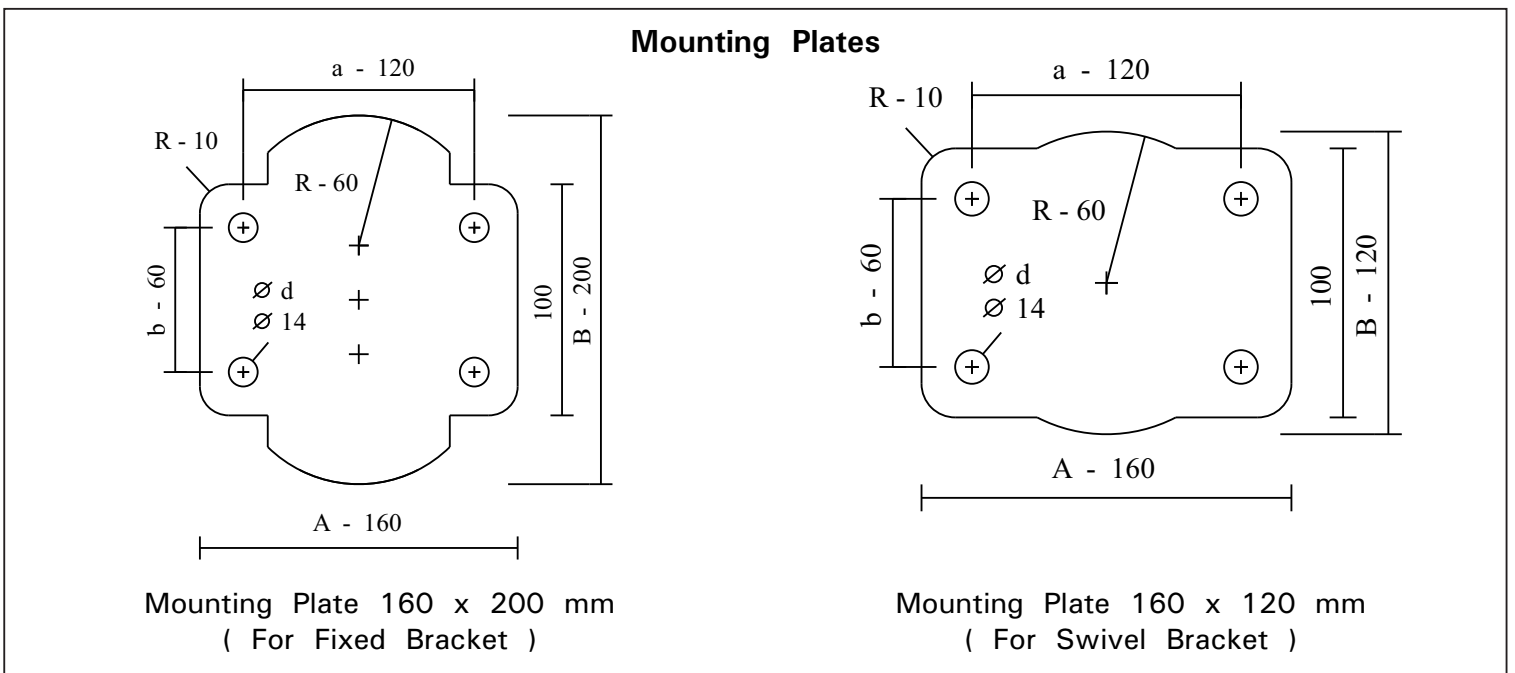


**HD TWIN - Swivel Castor Construction**



**HD TWIN - Swivel Castor with Brake**

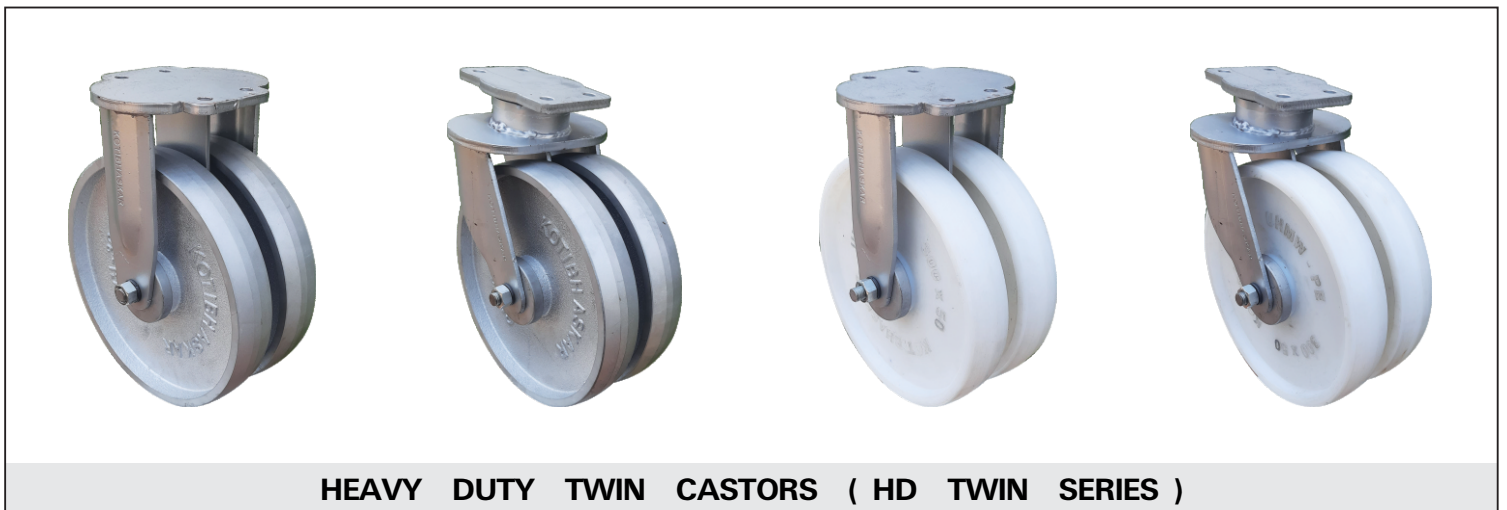
1. Heavy Duty Twin Fixed Brackets are manufactured from tested m. s. plates, cutting, embossed on press machine for high strength & joined together by welding process.
2. Heavy Duty Twin Swivel Brackets are manufactured from tested m. s. plates, cutting, embossed on press machine for high strength & joined together by welding process. Base & top are interlocked together with steel balls in machined ball races. These brackets are designed for heavy loads & long service life.



**HEAVY DUTY TWIN CASTORS ( HD - TWIN SERIES )**

No.	Castor Size Wheel D x W mm	Height H mm	Offset O	Mounting Plate			Load Carring Capacity Kg			
				A x B mm	a x b mm	d	UHMW	PU-CI	CI	MS-TR
01	FX - HD TWIN - 100 x 50	165	0	160 x 200	120 x 60	14	500	500	700	700
02	SW - HD TWIN - 100 x 50	165	50	160 x 120	120 x 60	14	500	500	700	700
03	FX - HD TWIN - 125 x 50	190	0	160 x 200	120 x 60	14	600	600	800	800
04	SW - HD TWIN - 125 x 50	190	50	160 x 120	120 x 60	14	600	600	800	800
05	FX - HD TWIN - 150 x 50	215	0	160 x 200	120 x 60	14	800	800	900	900
06	SW - HD TWIN - 150 x 50	215	60	160 x 120	120 x 60	14	800	800	900	900
07	FX - HD TWIN - 200 x 50	265	0	160 x 200	120 x 60	14	900	900	1100	1100
08	SW - HD TWIN - 200 x 50	265	60	160 x 120	120 x 60	14	900	900	1100	1100
09	FX - HD TWIN - 250 x 50	315	0	160 x 200	120 x 60	14	1100	1100	1300	1300
10	SW - HD TWIN - 250 x 50	315	70	160 x 120	120 x 60	14	1100	1100	1300	1300
11	FX - HD TWIN - 300 x 50	365	0	160 x 200	120 x 60	14	1300	1300	1500	1500
12	SW - HD TWIN - 300 x 50	365	70	160 x 120	120 x 60	14	1300	1300	1500	1500

1. Twin castors have the advantages of greater load carrying capacity for the same castor height.
2. The use of twin castor is advantageous than use of single wheel with wider trade width because of the differential movement of two wheels, the scrubbing action during turning is avoided and that increases wheel life by about 30 %.

**HEAVY DUTY TWIN CASTORS ( HD TWIN SERIES )**

**APPLICATIONS OF WHEELS & CASTORS**

<p>ELECTRIC STACKER</p> <p>1</p> 	<p>ELECTRIC FLOOR CRANE</p> <p>2</p> 	<p>ELECTRIC ORDER PICKER</p> <p>3</p> 	<p>ELECTRIC DRUM TILTER</p> <p>4</p> 
<p>HYDRAULIC PALLET TRUCK</p> <p>5</p> 	<p>HIGH LIFT PALLET TRUCK</p> <p>6</p> 	<p>HYDRAULIC STACKER</p> <p>7</p> 	<p>HYDRAULIC BOOM STACKER</p> <p>8</p> 
<p>HYDRAULIC FLOOR CRANE</p> <p>9</p> 	<p>HYDRAULIC FLOOR CRANE</p> <p>10</p> 	<p>HYDRAULIC DRUM TILTER</p> <p>11</p> 	<p>HYDRAULIC DRUM GRIPPER</p> <p>12</p> 
<p>GANTRIES</p> <p>13</p> 	<p>HYDRAULIC SCISSOR LIFT</p> <p>14</p> 	<p>FURNACE CHARGING TROLLEY</p> <p>15</p> 	<p>BELT CONVEYOR</p> <p>16</p> 

## APPLICATIONS OF WHEELS & CASTORS

<p>PLATFORM TROLLEY</p> <p>17</p> 	<p>WORKSHOP TROLLEY</p> <p>18</p> 	<p>TURNTABLE WORKSHOP TRUCK</p> <p>19</p> 	<p>DOUBLE WHEEL BARROW</p> <p>20</p> 
<p>SACK TROLLEY</p> <p>21</p> 	<p>MULTI UTILITY TROLLEY</p> <p>22</p> 	<p>THREE SHELF TROLLEY</p> <p>23</p> 	<p>FIVE SHELF TROLLEY</p> <p>24</p> 
<p>GAS CYLINDER TROLLEY</p> <p>25</p> 	<p>GAS CYLINDER TROLLEY</p> <p>26</p> 	<p>DRUM TROLLEY</p> <p>27</p> 	<p>CNC TOOL TROLLEY</p> <p>28</p> 
<p>CHIP TROLLEY</p> <p>29</p> 	<p>MOBILE ACCESS STEPS</p> <p>30</p> 	<p>BIN STORAGE TROLLEY</p> <p>31</p> 	<p>STAND TROLLEY</p> <p>32</p> 

**SELECTION CRITERIA FOR WHEELS & CASTORS**

**1. Load Carrying Capacity - @ 50 % of standard capacity.**

Load carrying capacities given in charts are on the basis of ideal conditions like load is equally distributed on all wheels, trolley running on horizontal, smooth and leveled surface at a speed below 6 km / hr in ambient temperature @ 30° C.

However actually on shop floor many abnormal conditions exists like uneven loading on castors, shock loads on castors, unevenness of shop floor and trolley speed.

Considering above conditions as a thumb rule, load carrying capacity of a castor is considered @ 50 % of standard stated capacity.

**2. Pushing / Pulling efforts**

1. Wheel Diameter - As diameter of wheel increases pushing / pulling efforts reduces.

2. Wheel Material - As hardness of wheel increases pushing / pulling efforts reduces.

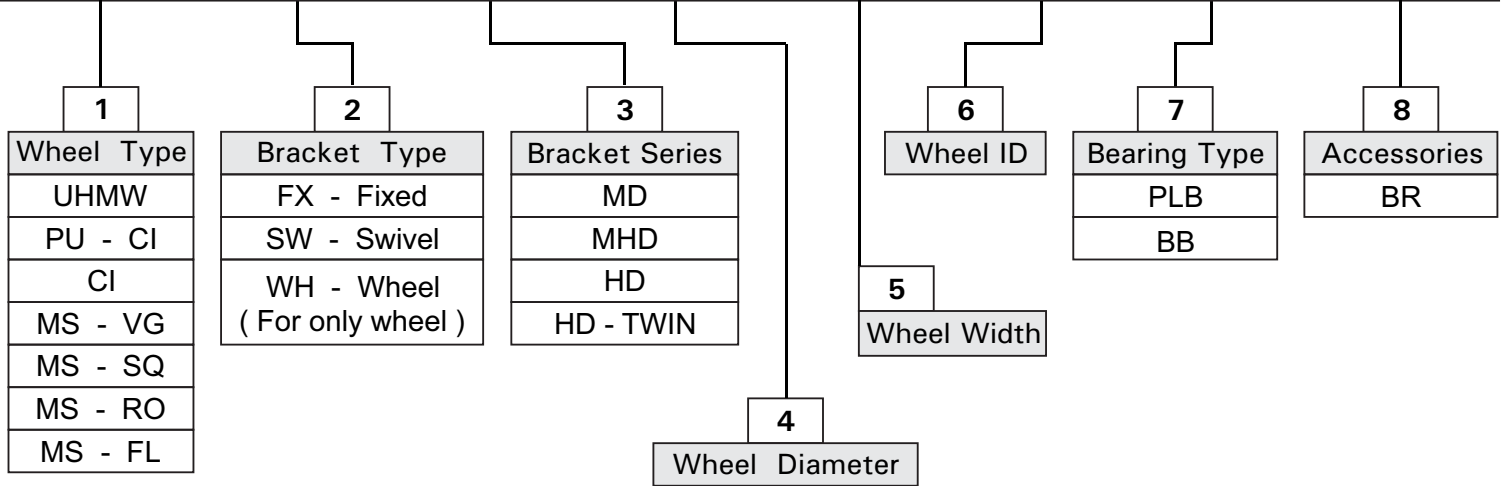
3. Bearing Used - Pushing / Pulling efforts required for wheel with ball bearings are @ 50 % lesser than wheels with plain bore. About 70 % of industries are using wheels with ball bearings.

No.	Particulars	Type of Wheel			
		UHMW	PU - CI	CI	MS - TR
01	Load Capacity	Better	Better	Excellent	Excellent
02	Pushing / Pulling Efforts	Low	Medium	Low	Low
03	Wear Resistance	Better	Better	Excellent	Excellent
04	Shock Resistance	Fair	Excellent	Nil	Nil
05	Road Grip	Fair	Excellent	Fair	Fair
06	Chemical Resistance	Excellent	Better	Poor	Poor
07	Noise Level	Medium	Low	High	High
08	Floor Protection	Better	Excellent	Bad	Bad
09	Comparative Life ( Times )	1 T	2 T	4 T	4 T
10	Hardness	75 D	95 A	175 BHN	175 BHN
11	Safe Working Temperature	70° C	70° C	250° C	250° C



**ORDERING FORMAT**

UHMW	-	WH	-	50	x	25	x	12	-	PLB	( Only Wheel )	
PU - CI	-	FX	-	MD	-	100	x	32	x	15	-	BB
MS - VG	-	SW	-	MD	-	125	x	40	x	20	-	PLB
CI	-	SW	-	MHD	-	150	x	50	x	25	-	PLB - BR
UHMW	-	FX	-	HD	-	200	x	75	x	25	-	BB
PU - CI	-	SW	-	HD - TWIN	-	250	x	50	x	25	-	BB
MS - SQ	-	SW	-	HD	-	300	x	50	x	25	-	BB
CI	-	SW	-	HD	-	300	x	75	x	25	-	BB - BR



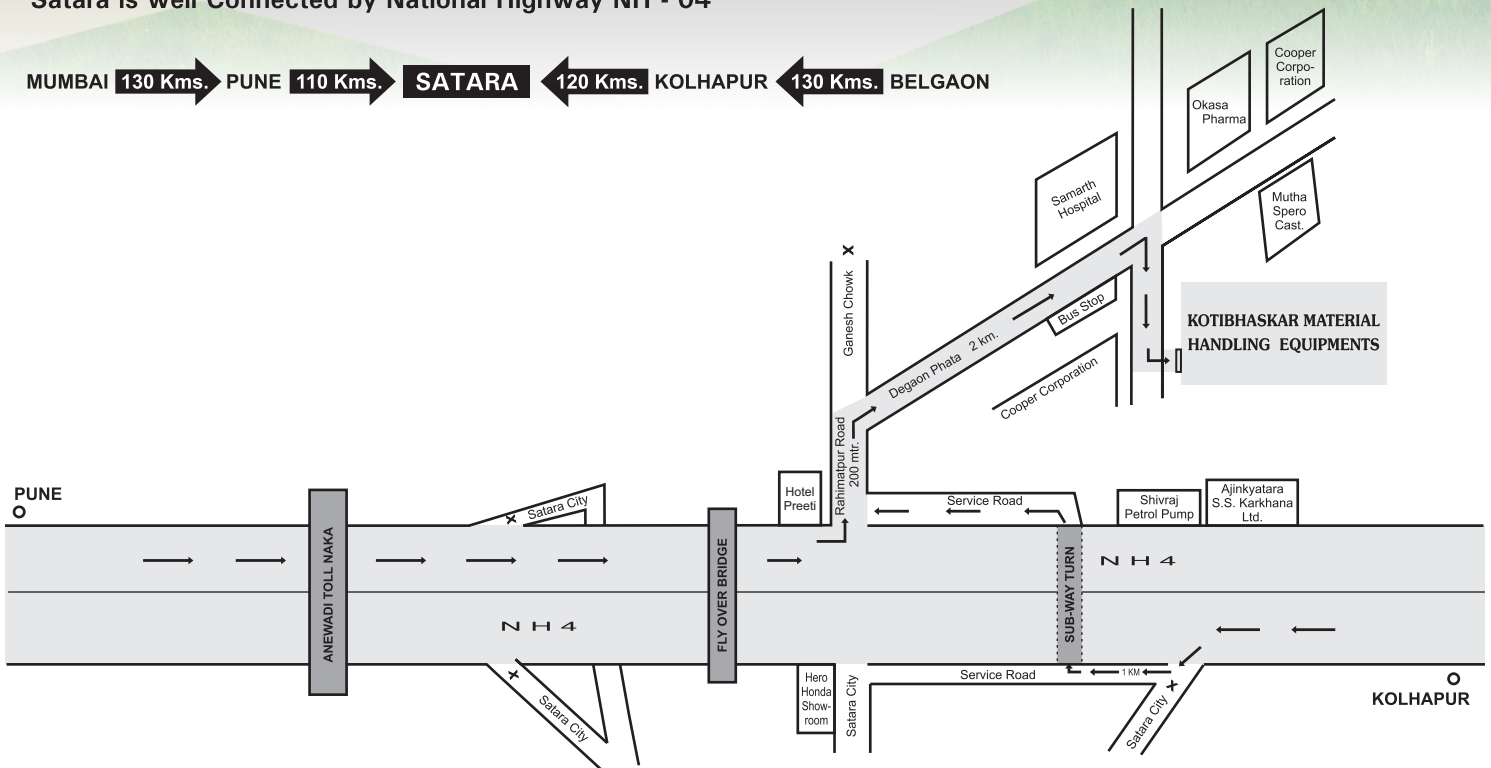
<b>1. Wheel Type</b>			<b>4. Wheel Diameter</b>		
1.	UHMW	Ultra High Moleculer Wt Polyethylene			
2.	PU - CI	Polyurethane on Cast Iron core			
3.	CI	Cast Iron			
<b>2. Bracket Type</b>			<b>5. Wheel Width</b>		
1.	FX	Fixed Bracket			
2.	SW	Swivel Bracket			
3.	WH	Only Wheel			
<b>3. Bracket Series</b>			<b>6. Wheel ID ( Bore )</b>		
1.	MD	Medium Duty			
2.	MHD	Medium Heavy Duty			
3.	HD	Heavy Duty			
4.	HD - TWIN	Heavy Duty - Twin	<b>7. Bearing Type</b>		
			1.	PLB	Plain Bore
			2.	BB	Ball Bearing
			<b>8. Accessories</b>		
			1.	BR	Wheel Brake & Swivel Lock



**LOCATION MAP**

Satara is well Connected by National Highway NH - 04

MUMBAI 130 Kms. PUNE 110 Kms. **SATARA** 120 Kms. KOLHAPUR 130 Kms. BELGAON



• *Kotibhaskar Material Handling Equipments reserves the rights to introduce changes without prior notice.*  
• *Copyright in the above material subsists in common law with the company. No portion of the material or the entire material may be photo copied in any manner without the prior approval of the company.*

The Manufacturer and Exporter  
**KOTIBHASKAR MATERIAL HANDLING EQUIPMENTS**  
Plot No. K-3/2/1, Additional M.I.D.C., Satara - 415 004.  
• Cell : 98224 13252, 83800 95805,  
83800 95804, 83800 95552  
• Email : amodsales@gmail.com , amodsatara@gmail.com  
• Website : www.kotibhaskar.in

**Nationwide Sales Network**  
Authorised Distributors in  
Mumbai, Pune, Nashik, Aurangabad,  
Ahmednagar, Nagpur, Kolhapur,  
Sangli, Solapur, Belgaum, Goa, Indore,  
Bhopal, Uttaranchal, Chhattisgarh,  
Secunderabad, etc.